



MCL HANGER

CONCENTRIC Open Web Steel Joist Hanger

M1 Hanger Cut Sheet

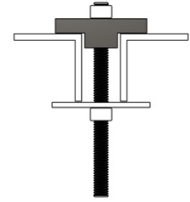
Material Code -

CSI Number 055600

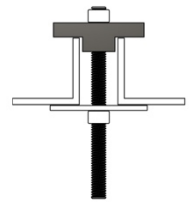
Sintered High Temp Metal

- For new construction, building upgrades, floor plan changes and maintenance.
- Use on either top or bottom cord of open web steel joist where cord gap is between .85" - 1.0875".
- Use to hang items from Unistrut or to affix Unistrut bar to an open web steel joist.
- Low narrow profile allows installation within 6" of panel points.
- Quick and easy to pre-assemble and install.
- Use any length all thread rod in 1/4", 3/8", or 1/2" diameter.
- Need heavy duty washer (2.5" diameter x 1.34" thick), all thread rod, and hex nuts for installation. Can be purchased separately through MCL Hangers.
- All parts manufactured in the United States.

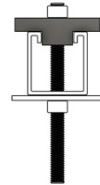
Top cord, end view



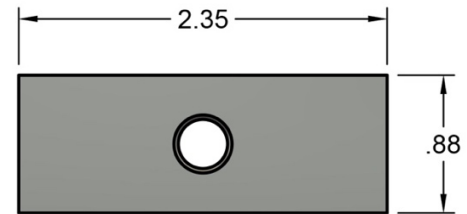
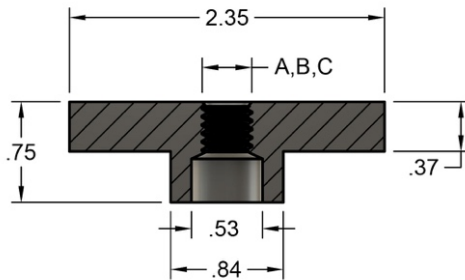
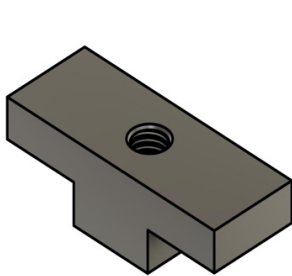
Bottom cord, end view



Unistrut, end view



MCL Hangers for 3/8" and 1/2" meets standards for safety under UL203, ULC/ORD C203 and NFPA-13 Pipe Hanger Equipment for Fire Protection Service.



Part Number	A Thread Size	Max. Pipe Size	UL Test Load (lbs.)
MM125T	1/4"	-	-
MM138T	3/8"	4"	1500
MM150T	1/2"	8"	4050





MCL HANGER

CONCENTRIC Open Web Steel Joist Hanger

M1 Hanger Cut Sheet

Material Code -

CSI Number 055600

Sintered High Temp Metal

MCL HANGERS (M1, M2, M3) - FC-0208-50 MATERIAL SPECIFICATIONS

Iron-Copper and Copper Steel

PPM Material Properties – Inch-Pound Units

MINIMUM VALUES		TYPICAL VALUES											
Material Designation Code	Minimum Strength (A)	TENSILE PROPERTIES			ELASTIC CONSTANTS					HARDNESS			
	Yield	Ultimate Strength	Yield Strength (0.2%)	Elongation (in 1 inch)	Young's Modulus	Poisson's Ratio	Unnotched Charpy Impact Energy	Transverse Rupture Strength	Compressive Yield Strength (0.1%)	Macro-indentation (apparent)	Micro-indentation (converted)	RBF Fatigue Limit 90% Survival	Density
	10 ³ psi	10 ³ psi	10 ³ psi	%	10 ⁶ psi		ft-lbf	10 ³ psi	10 ³ psi	Rockwell		10 ³ psi	g/cm ³
-50	50	60	55	<1	17.5	0.25	5	125	50	73	N/D	23	6.7

INSTALLATION INSTRUCTIONS

Items & quantities	1/4"	3/8"	1/2"
1 - M1 MCL Hanger	MM125 MM125T	MM138 – cULus MM138T – cULus	MM150 – cULus MM150T – cULus
1 – All thread rod	1/4" – 20	3/8" – 16	1/2" - 13
2 – Hex nuts	1/4" – 20	3/8" – 16	1/2" - 13
1 – Heavy Duty washer	10+ gauge x 2.5" diameter		

How to install:

1. Take all thread rod and thread up through the hanger enough to secure a hex nut onto the top of the hanger.
2. Where you want to put the hanger, hold all thread rod and push hanger up through the center gap of the top or bottom cord until the hanger goes through. Rotate 90° and drop hanger back down on the cord.
Note: For Unistrut hold the hanger and drop the all thread rod through the elongated slot, resting the hanger on top.
3. Slide heavy duty washer onto the threaded rod and hold in place while threading a hex nut onto the rod. Finger-tighten so that tension on washer secures the hanger assembly in place.
4. Torque nuts: 60 lb inch or 6-8 NW. If torque wrench is not available, use a wrench tighten hex nut 1/2 to 1 full turn.

